



**PLANNING AND STRUCTURES
DIVISIONS**

Enplan Group



LANDMARKS



Glossary

Enplan Group

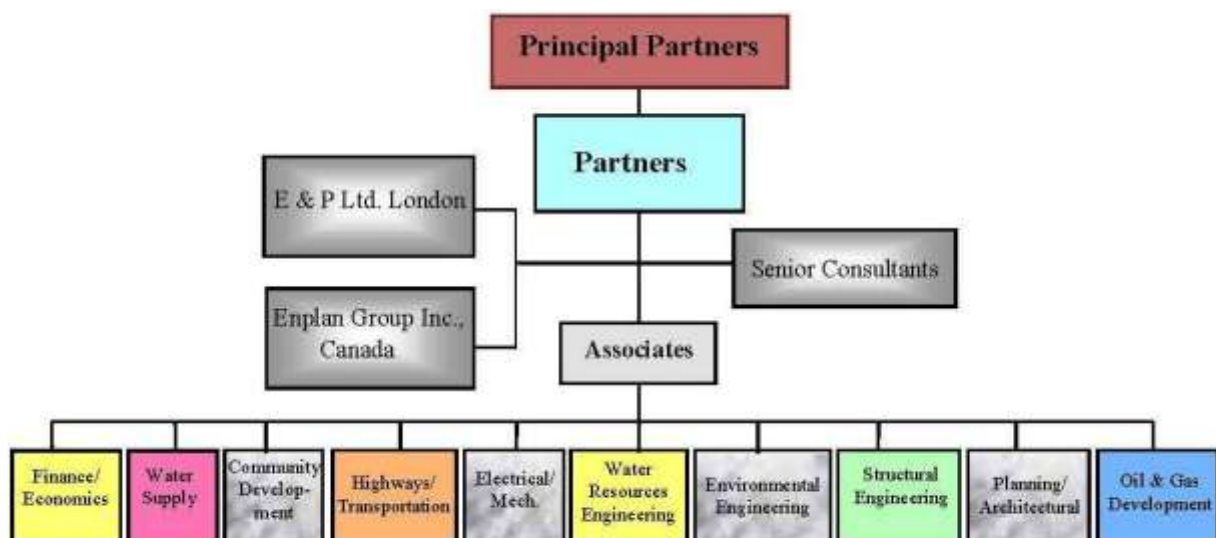
ENPLAN GROUP is a Nigerian firm of Consulting Engineers and Planners, established in 1970 to practice and advance planning techniques and engineering technology in Nigeria. From a small group of experts who pooled their resources together in 1970, **ENPLAN GROUP** has developed considerable expertise in many engineering fields and related disciplines with a capacity to undertake large and complex assignments.

ENPLAN GROUP effectively utilizes modern technology including computers, GIS, RTK GPS and many computer models for its operations as well as for data management, designs, investigations, assessments, supervision, project management and training.



ENPLAN GROUP is a wholly indigenous partnership and all the Partners are professionally qualified Nigerians. **ENPLAN GROUP** is a members of the Association of Consulting Engineers of Nigeria (ACEN) which is a member of the International Federation of Consulting Engineers (FIDIC), **ENPLAN GROUP** complies with FIDIC's code on professional integrity, quality and competence.

With the Head Office in Lagos, ENPLAN GROUP maintains Zonal Headquarters at Enugu and Abuja and site offices in various parts of the country. Enplan Group also has an international division which provides specialist staff, equipment and facilities for specific projects and assignments as and at when needed.



Enplan Group's Organizational Chart

Structural Engineering Division

This is the oldest division of the Firm and encompasses all forms of structural engineering construction including reinforced and prestressed concrete, steel-work and timber.

The scope of work covers initial investigations, structural optimization, design and detailing, preparation of bending schedule and supervision of construction for building structures ranging from single storied residential buildings to complex multi-stories offices and public buildings, institutional buildings and other special structures. As far back as 1970 ENPLAN GROUP has used computer programs for the analysis of complex structures. ENPLAN GROUP has also acted as the Coordinating Consultants or Project Managers for building complexes requiring multi-disciplinary inputs.

The activities of the Firm in this Division which have steadily grown with complex architectural forms are grouped under three main areas:

- Institutional Buildings
- Public and Residential Buildings
- Specialised Structures

Institutional Buildings

The activities of this Department primarily involve the structural analysis and construction supervision of buildings. They are generally medium rise structures but with specialized areas requiring special treatments. ENPLAN GROUP has over the years developed expertise in this field and undertaken numerous conventional and complex assignments. :



Proposed Senate Building LASU, Ojo Campus



National Universities Commission (NUC) Office Building, Victoria Island, Lagos



Admin Building, Faculty of Engineering, UNIUYO

Public and Residential Buildings

This Department of the Structural Engineering Division deals with all categories of public buildings namely, hotels, office blocks, hospitals, mosques, churches, markets, shops, restaurants, etc., and different types of development from project or concept planning, site investigations and budget estimates, through design to construction supervision.



Aiwe Central Mosau



CCB Head Office Block Enugu



University of Agriculture, Abeokuta (UNAAB) Library

Specialised Structures

This Department deals with special structures, such as stadia, hydraulic structures, masts, towers, silos, water towers, factories, warehouses, dams and harbor works. ENPLAN GROUP has over the years improved the use of computer aided design methods and models, in providing services to numerous complex assignments in this Department.



Intake tower under construction



Nnamdi Azikwe Stadium



Planning Division

In 1976 ENPLAN GROUP extended its area of activity into town and regional planning. Within a short time afterwards the Firm's involvement in planning work grew considerably and expanded into university. Presently, the Planning Division is managed under the following specialized areas:

- Urban and Regional Planning
- University Planning

Urban and Regional Planning

ENPLAN GROUP provides comprehensive services in the field of Urban and Regional Planning which extends to planning of large suburbs, preparation of master plans and rural development schemes. The Firm has acquired considerable experience over the many years of activity. In response to the steady growth in complexity of modern development, the Firm has introduced the use of modern techniques in providing services which include computer aided design for planning and preparation of master plans.

University Planning

Education, research and service to the community plan an important role in developing a nation. A University improves human attitudes, develops talents, increases and explores knowledge, creates responsibility, etc. In view of the above the Federal Government has placed emphasis on University education since the past three decades. ENPLAN GROUP is aware of the important role a University has to play in a society and has therefore maintained a wide national involvement in the planning and design of Universities and institutions of higher learning in Nigeria. The Firm has undertaken major masterplanning work of these Universities and institutions of higher learning.

Structural Integrity Assessment

Enplan Group has over the years gained a lot of experience in structural assessment of buildings, and other infrastructure including water retaining structures, roads and dams. The services range from visual inspection to full structural integrity investigation including testing of various members of the structure. The firm uses modern techniques as well as models for its structural assessment.

Landmarks

A select list of projects carried out by the firm over the years is given in the table below.

DESCRIPTION	CLIENT
Institutional Buildings	
Admin Building, Faculty of Engineering, University of Uyo	UNIUYO, Akwa Ibom State
Library Building, University of Agric., Abeokuta	Univ. of Agric. Abeokuta
Health Centre, FUT, Owerri	NUC
International Agricultural Training Centre, Ngada	LCBC, Marona, Cameroon
Academic Buildings 1st Phase FUTO (with HASKONING bv, the Netherlands)*	NUC
Public and Residential Buildings	
14-Storey Office Block	Star Finance
10-Storey Consortium House	ABC Merchant Bank Nig Ltd
Ministry of Defence, Abuja	FMD
Katsina State Secretariat Complex	Katsina State Govt.
Ogun State Secretariat Complex	Ogun State Govt.
Finance House Building, Lagos	LSDPC
NUC Office Block, V.I., Lagos	NUC
Central Mosque, Aiyeye	Aiyeye Moslem Community
Hospital Complex Police Headquarters, Abuja	NPF
Specialized Structures	
Vegetable Oil Factory at Onitsha	Golden Oil Ind. Ltd
Club Swimming Pool, Enugu	Enugu Recreation Club, Anambra State
Wire Products Factory, Kaduna	UWPC, Kaduna
Flour Mills, Maiduguri	Maiduguri Flour Mills Ltd
Airport Terminal Building, Kano	FMCA
Modernisation of Enugu Sports Stadium	Anambra State Sports Council
Urban and Regional Planning	
Ogun State Government Secretariat (Consortium)	MOW & H, Ogun State
Development at Adeola Odeku Ibile Residential Complex	Ibile Commercial Corporation
Suleja Township	MOW
University Planning	
FUT, Owerri	FUT, O
Ngala Agric Training Centre	LCBC
Lagos State University, Ojo	LASU, Ojo
University of Ilorin	NUC
Structural Integrity Assessment	
13 Storey Bank of Industry Building	Bank of Industry
GlaxoSmithKline Head Office Buildings	GSK Consumer (Nigeria) Limited



Head Office:

Enplan Group
2nd Floor 18 Johnson Street
Ilupeju
P. O. Box 4177 Marina
Lagos Nigeria
Tel: +234 18787 131
Fax: +234 805 801 2349
Email: eg.los@enplan.org

Abuja Regional Headquarters:

Enplan Group
No. 16 Durban Street, Wuse II
P.M.B. 5009 Wuse P.O.
Abuja, Nigeria.
Tel: +234 803 305 9606
Fax: +234 805 801 2349
Email: eg.abj@enplan.org

Enugu Regional Headquarters:

Enplan Group
2 Ekulu Terrace GRA
P.M.B 01200 Enugu
Enugu State, Nigeria.
Tel: +234 803 312 1890
Fax: +234 805 801 2349
Email: eg.enu@enplan.org

International:

Enplan Group Inc.
1254 Summerside Drive,
Edmonton, Alberta,
T6X 1B1, Canada
Tel & Fax: +1 780 430 6867
Email: EGI@enplan.org